

GROSS FLOOR AREA:

Overall Internal GFA: 169m²

External Space:

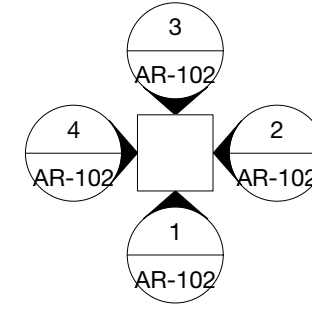
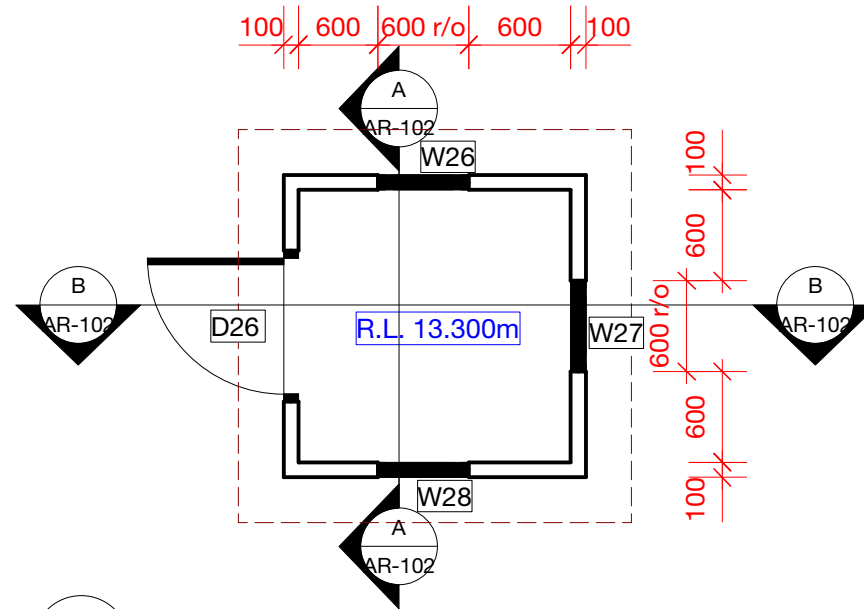
Deck: 17m²
 Steps: 6m²
 Walkway: 9m²
 Generator/Services Room: 17m²

Overall External GFA: 49m²

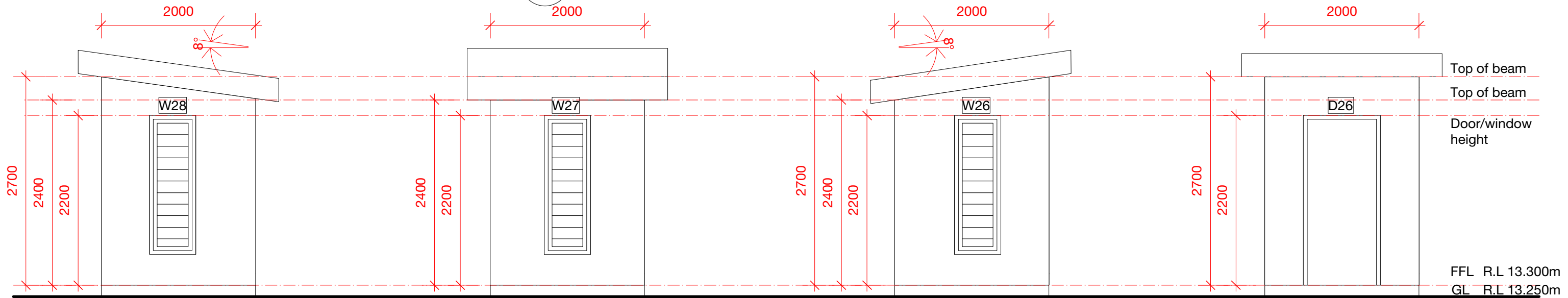
Overall Building GFA: 218m²

Total Waiting Bure GFA: 6m²

Total Security Booth GFA: 8m²



1 TYPICAL SECURITY BOOTH FLOOR PLAN
SCALE: 1:50

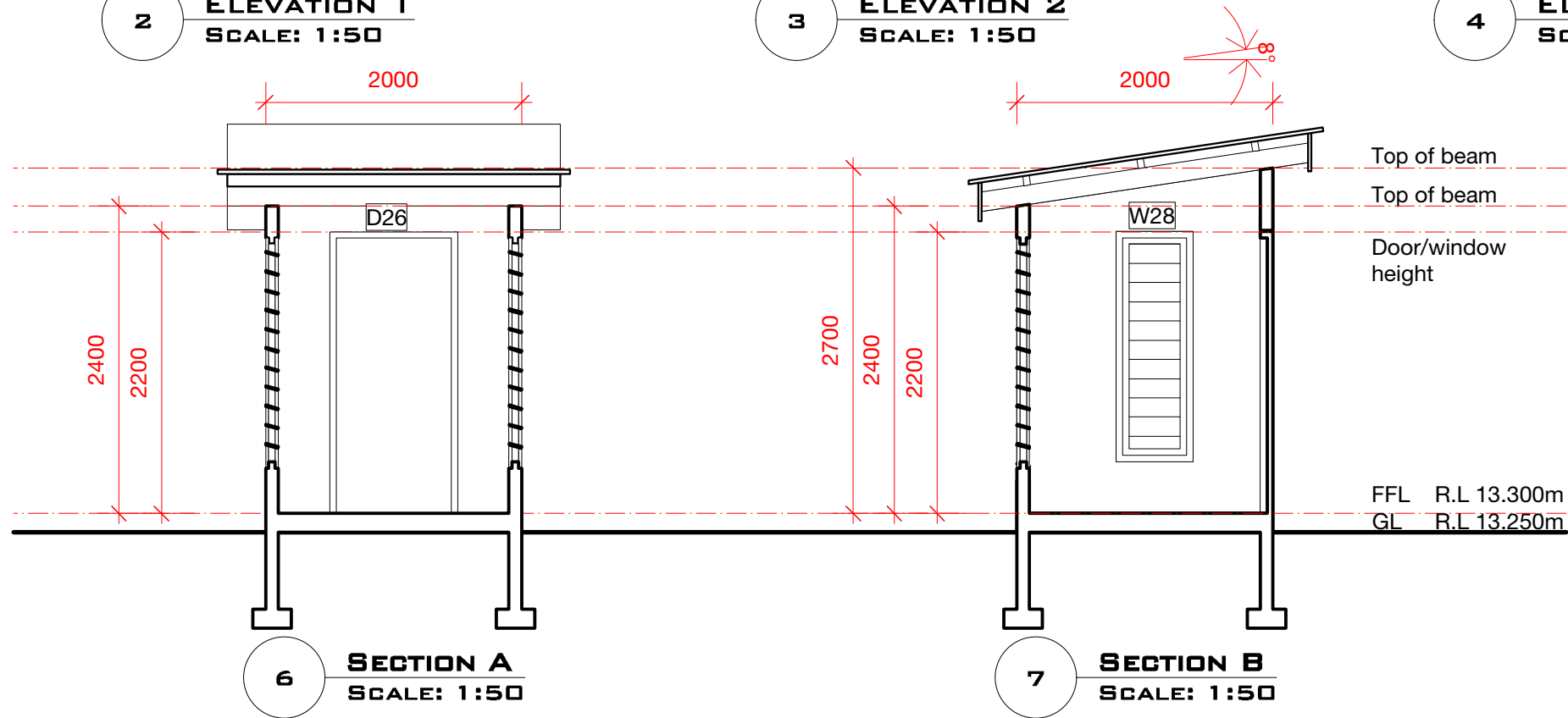


2 ELEVATION 1
SCALE: 1:50

3 ELEVATION 2
SCALE: 1:50

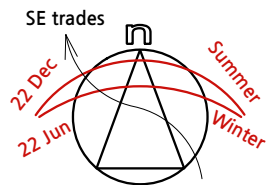
4 ELEVATION 3
SCALE: 1:50

5 ELEVATION 4
SCALE: 1:50



6 SECTION A
SCALE: 1:50

7 SECTION B
SCALE: 1:50



TENDER ISSUE
conway architects
 Architects + Master Planning

LTA KARAVI
 WEIGHBRIDGE STATION- BA
 TYPICAL SECURITY BOOTH FLOOR
 PLAN, ELEVATIONS & SECTIONS
 SCALE 1:50
 24TH MAY 2019
 AR-LTA-103



Shri Singh & Associates Limited
 Consulting Building, Civil & Structural Engineers