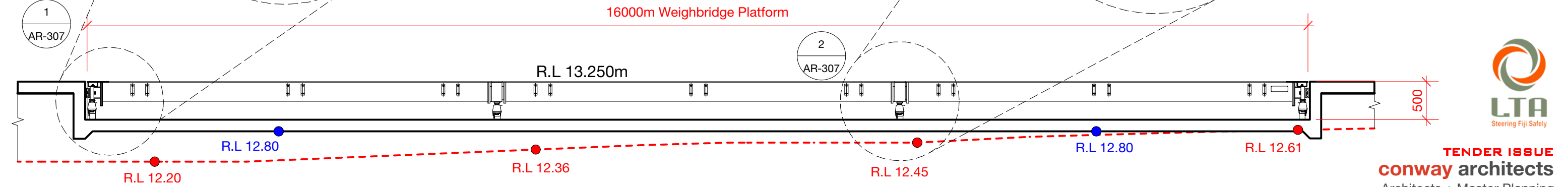
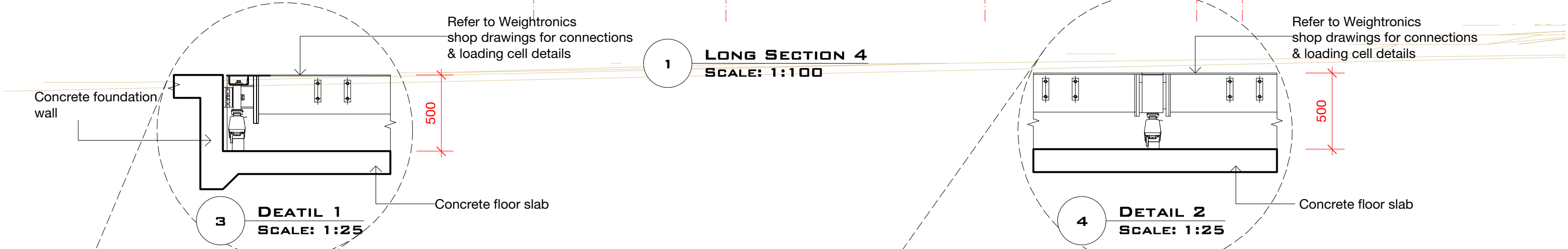
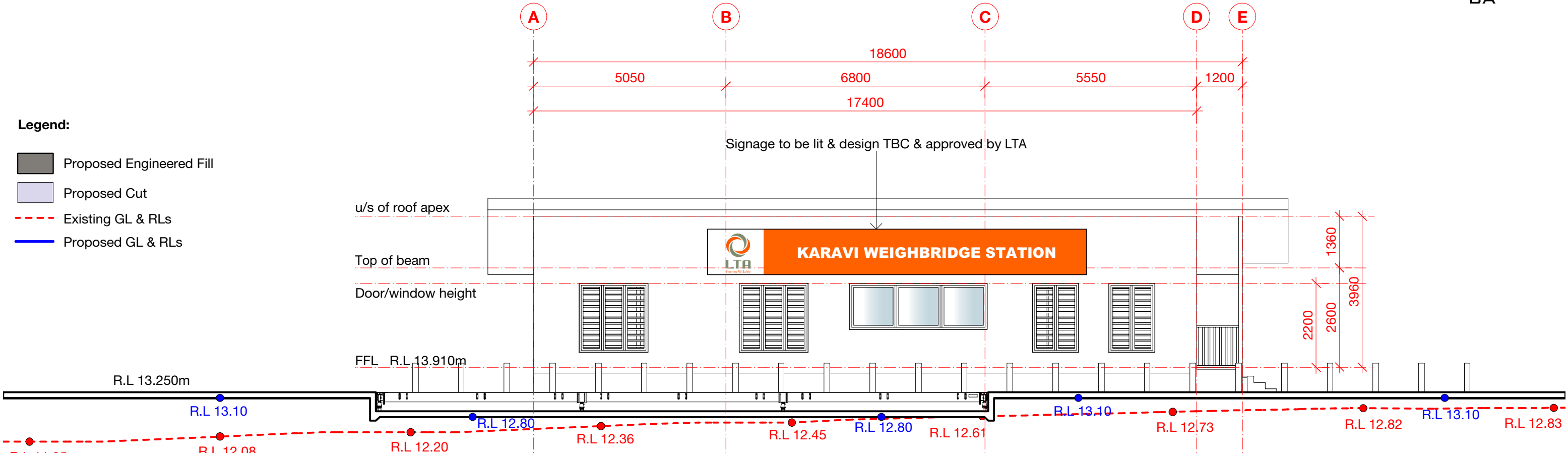


**Legend:**

- Proposed Engineered Fill
- Proposed Cut
- Existing GL & RLs
- Proposed GL & RLs



**1 LONG SECTION 4**  
SCALE: 1:100

**3 DETAIL 1**  
SCALE: 1:25

**4 DETAIL 2**  
SCALE: 1:25

**2 BLOW UP WEIGHBRIDGE SECTION**  
SCALE: 1:50



**TENDER ISSUE**  
**conway architects**  
Architects + Master Planning

**hpm**  
**IAP**  
Shri Singh & Associates Limited  
Consulting Building, Civil & Structural Engineers

LTA KARAVI  
WEIGHBRIDGE STATION- BA  
**LONG SECTION 4**  
SCALE: AS SHOWN  
24TH MAY 2019  
**AR-LTA-307**