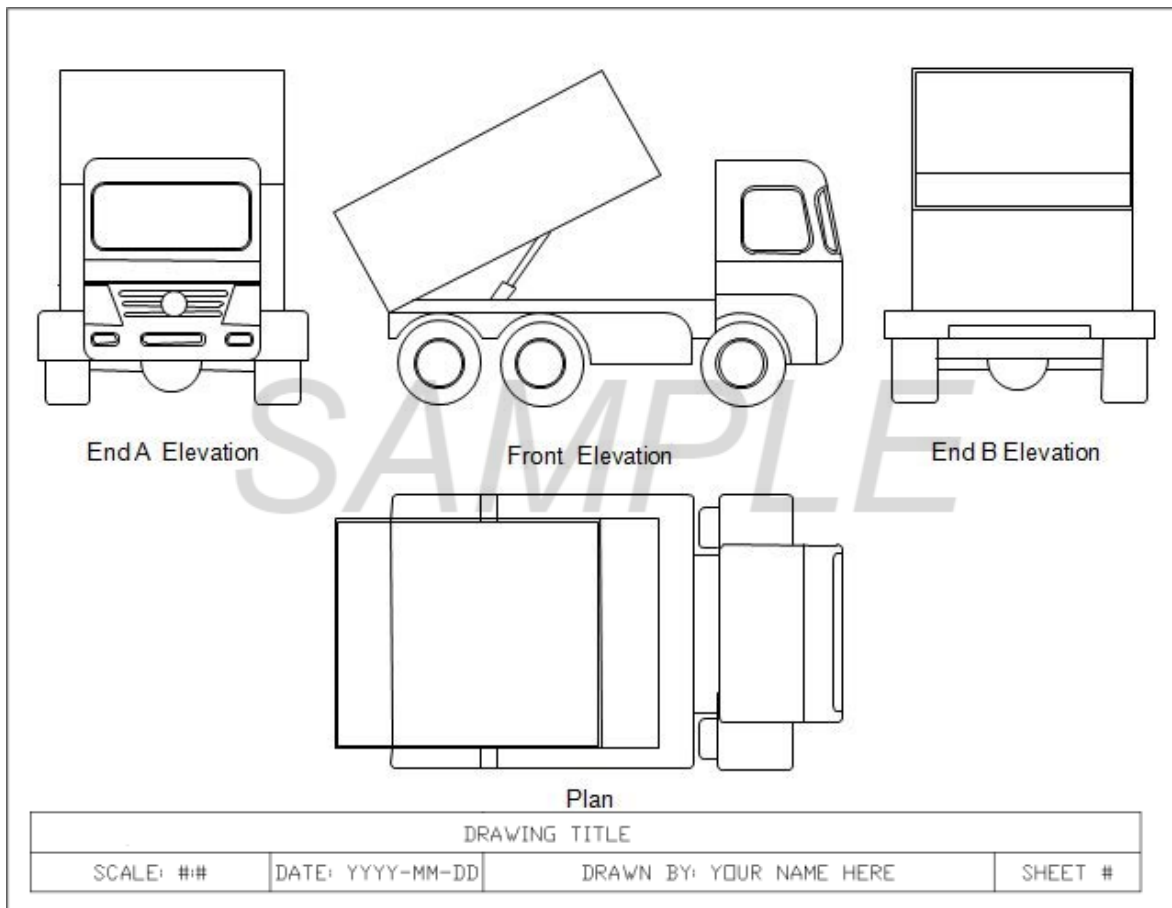


# SAMPLE LAYOUT FOR ALL LTA CONSTRUCTION, REFURBISHMENT & MODIFICATION DRAWINGS



## Important Notes:

- Reference must be made to the Code of Practice for Mechanical Engineering Plans for all plans and specifications submitted as per Land Transport (Vehicle Registration and Construction) Regulation 36.
- All drawings **must** be drawn using AutoCad.
- The plan can either be drawn in 1<sup>st</sup> or 3<sup>rd</sup> angle projection.
- Chassis Number and Engine number of the vehicle **must** be written on the side of the drawing.
- All dimensions must be done in 'mm' adhering to the **scale** provided in the Title Block.
- The Title Block may not necessarily be of the format above, however it must include details such as the Drawing Title, Scale, Date, Name, sheet Number.
- Where the use of symbols is utilized all drawings must be accompanied by a **key** outlining all the symbols.
- All major details such as joints, fixtures, welding must be clearly shown and, where further detail is required, must be indexed and an exploded view of the same to be shown on latter sheets.
- The type of fixtures must be clearly shown with labeled symbols such as welding, brackets, bolts, etc.
- All details that do not fall into the line of vision from any of the elevations must be depicted adequately using hidden lines.